


Bone Health Gene Test Women

**SAMPLE
SUMMARY REPORT**



Bone Health and Diseases

Bone Disorders

Traits	Risk	Rating	Description
	Avascular Necrosis Typical	5.4	As per your genotype, you have a typical risk of developing avascular necrosis.

Bone Health

Traits	Risk	Rating	Description
	Vitamin D, Calcium and Bone health Slightly Elevated	6.8	As per your genotype, you have a slightly elevated risk against poor bone health due to poor vitamin D and calcium metabolism.
	Bone Mineral Density Typical	5.3	As per your genotype, you have a typical risk of developing low bone mineral density.

Joint Disorders

Traits		Risk	Rating	Description
	Juvenile Arthritis	Slightly Elevated	6.2	As per your genotype, you have a slightly elevated risk of developing juvenile arthritis.
	Gout	Typical	5.5	As per your genotype, you have a typical risk of developing gout.
	Psoriatic Arthritis	Typical	5.5	As per your genotype, you have a typical risk of developing psoriatic arthritis.
	Ankylosing spondylitis	Typical	5.9	As per your genotype, you have a typical risk of developing Ankylosing Spondylitis.
	Osteoarthritis	Slightly Elevated Risk	6.3	As per your genetics, you have a slightly elevated risk of developing osteoarthritis.
	Rheumatoid Arthritis	Typical Risk	5.9	As per your genetics, you have a typical risk of developing rheumatoid arthritis.

How to Read Your Report

— WHAT IS GENETICS? —

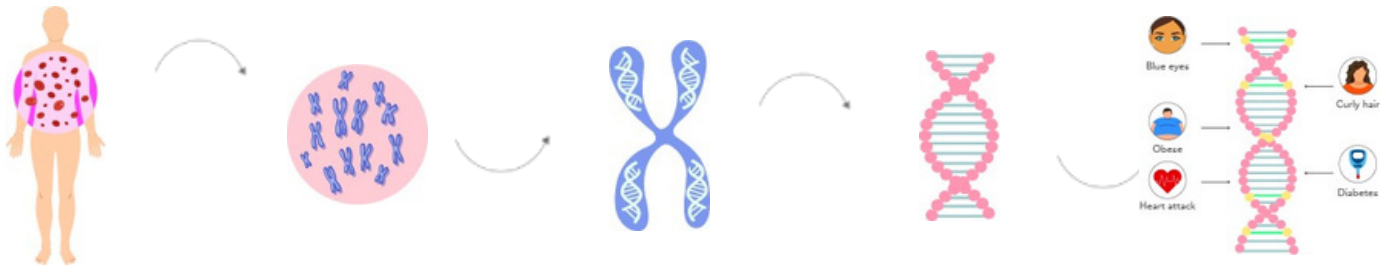
Human are made up of cells

Cells are made up of nucleus

Nucleus is made up of chromosomes

Chromosomes are made up of DNA

DNA is made up of genes

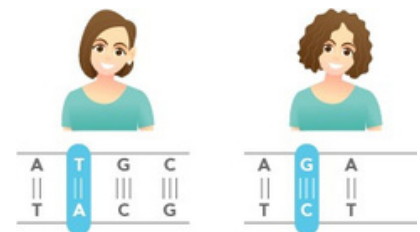


Genes are coded by nucleotides

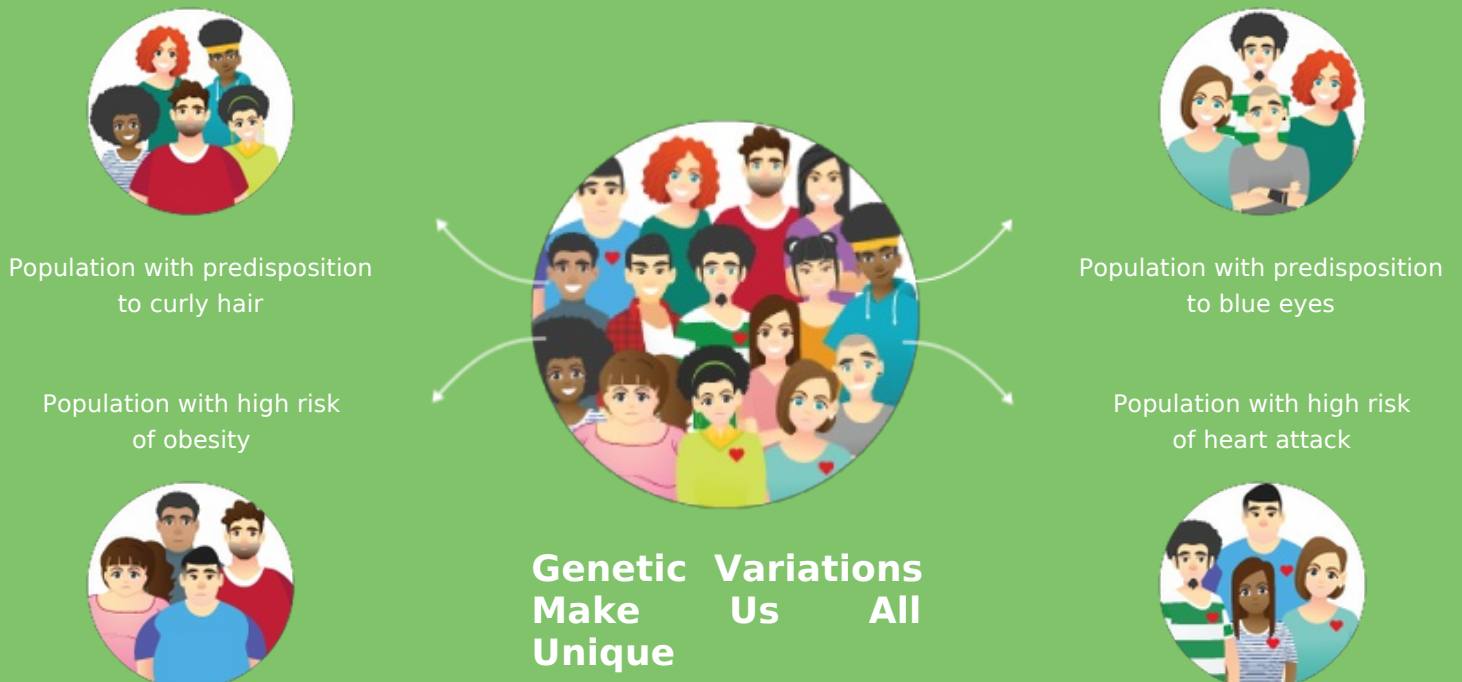
A	T	G	C
T	A	C	G



Changes in nucleotides lead to genetic variations
Straight hair Curly hair



WHAT IS PREDICTIVE GENETICS?



— SCORE INTERPRETATIONS —

SCORE	DEPICTION	INTERPRETATION
0-2	Excellent / Protective	An 'excellent / protective' score indicates a very favorable response or ability for a trait
2.1-4	Good / Lower Risk	A 'good / lower risk' score indicates a favorable response or ability for a trait
4.1-6	Typical	A 'typical' score indicates a typical response or ability for a trait
6.1-8	Poor / Slightly Elevated	A 'poor / slightly elevated' score indicates an unfavorable response or ability for a trait
8.1-10	Very Poor/ Highly Elevated	A 'very poor / highly elevated' score indicates a very unfavorable response or ability for a trait

— GENERAL GUIDELINES —

Genetic risk or predisposition given in the report is based on statistically relevant genomics research studies, which should not be taken as a diagnosis of any health condition or overall wellness.

Traits in the report are not genetically interlinked; their genetic associations are independent of each other. Therefore, every trait score and interpretation are independent of each other.



EXPLORE MORE GENE TESTS

1. ALLERGY GENE REPORT WOMEN/MEN
2. BONE HEALTH GENE REPORT MEN
3. CARDIOVASCULAR GENE REPORT WOMEN/MEN
4. CIRCADIAN GENE REPORT WOMEN/MEN
5. DENTAL GENE REPORT WOMEN/MEN
6. FITNESS GENE REPORT
7. GASTRO GENE REPORT WOMEN/MEN
8. HEMATOLOGY GENE REPORT WOMEN/MEN
9. HORMONAL GENE REPORT WOMEN/MEN
10. IMMUNOLOGY GENE REPORT WOMEN/MEN
11. INFECTIOUS GENE REPORT WOMEN/MEN
12. LIFESTYLE GENE REPORT WOMEN/MEN
13. NEUROLOGY GENE REPORT WOMEN/MEN
14. NUTRITION GENE REPORT
15. OPHTHAL GENE REPORT WOMEN/MEN
16. PERSONALITY GENE REPORT
17. PULMONARY GENE REPORT WOMEN/MEN
18. RENAL GENE REPORT WOMEN/MEN
19. SKIN GENE REPORT

THE MOST
EXPENSIVE
REAL ESTATE IS
YOU

Whatsapp Us



Call Us



+91-9743430000

devika@quanutrition.com

www.quanutrition.com

QUA[®]
NUTRITION
SIGNATURE NUTRITION CLINICS