

# Dental Gene Test Women

**SAMPLE  
SUMMARY REPORT**








# Dental Diseases



## Inflammatory Disease

Traits		Risk	Rating	Description
	Peri-implantitis	Slightly Elevated Risk	7.2	As per your genetics, you have a slightly elevated risk of developing peri- implantitis.
	Recurrent Aphthous Stomatitis	Slightly Elevated Risk	6.9	As per your genetics, you have a slightly elevated risk of developing recurrent aphthous stomatitis.
	Oral Lichen Planus	Slightly Elevated Risk	6.4	As per your genetics, you have a slightly elevated risk of developing oral lichen planus.
	Gingivitis	Typical Risk	5.0	As per your genetics, you have a typical risk of developing gingivitis.


## Developmental Disorder

Traits	Risk	Rating	Description
 Developmental Defects of Enamel	Slightly Elevated Risk	8.0	As per your genetics, you have a slightly elevated risk of developing developmental defects of enamel.
 Dental Fluorosis	Slightly Elevated Risk	8.0	As per your genetics, you have a slightly elevated risk of developing dental fluorosis.
 Tooth agenesis	Slightly Elevated Risk	6.4	As per your genetics, you have a slightly elevated risk of developing tooth agenesis.
 Malocclusion	Typical Risk	5.7	As per your genetics, you have a typical risk of developing malocclusion.
 Temporomandibular Joint Disorder	Slightly Elevated Risk	6.4	As per your genetics, you have a slightly elevated risk of developing temporomandibular joint disorder.

## Infectious Disease

Traits	Risk	Rating	Description
 Dental Caries	Slightly Elevated Risk	6.3	As per your genetics, you have a slightly elevated risk of developing dental caries.
 Periodontitis	Slightly Elevated Risk	6.1	As per your genetics, you have a slightly elevated risk of developing periodontitis.

## Neuromuscular Disorder

Traits	Risk	Rating	Description
	Bruxism	Slightly Elevated Risk	7.0 As per your genetics, you have a slightly elevated risk of developing bruxism.

# How to Read Your Report

## — WHAT IS GENETICS? —

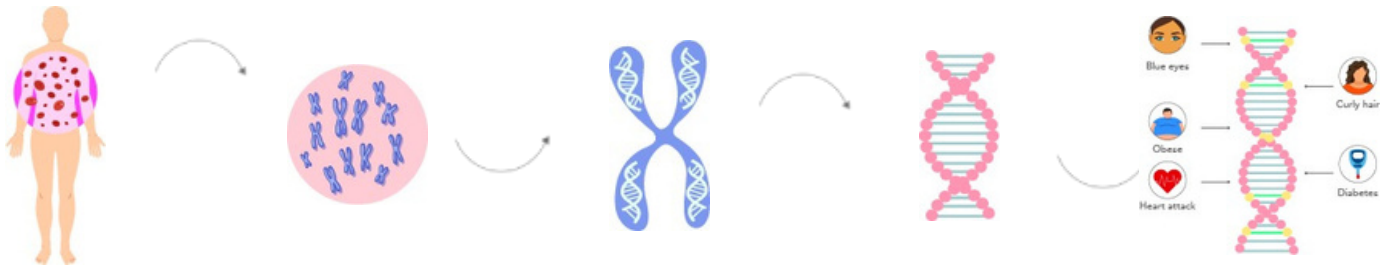
Human are made up of cells

Cells are made up of nucleus

Nucleus is made up of chromosomes

Chromosomes are made up of DNA

DNA is made up of genes



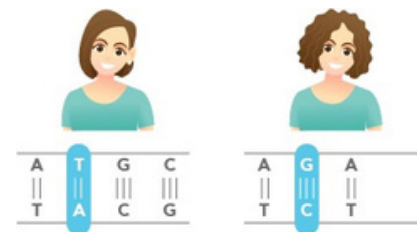
Changes in nucleotides lead to genetic variations

Genes are coded by nucleotides

A	T	G	C
T	A	C	G



~~Straight hair~~ Curly hair



## WHAT IS PREDICTIVE GENETICS?



Population with predisposition to curly hair

Population with high risk of obesity



**Genetic Variations Make Us All Unique**



Population with predisposition to blue eyes

Population with high risk of heart attack



## — SCORE INTERPRETATIONS —

SCORE	DEPICTION	INTERPRETATION
0-2	Excellent / Protective	An 'excellent / protective' score indicates a very favorable response or ability for a trait
2.1-4	Good / Lower Risk	A 'good / lower risk' score indicates a favorable response or ability for a trait
4.1-6	Typical	A 'typical' score indicates a typical response or ability for a trait
6.1-8	Poor / Slightly Elevated	A 'poor / slightly elevated' score indicates an unfavorable response or ability for a trait
8.1-10	Very Poor/ Highly Elevated	A 'very poor / highly elevated' score indicates a very unfavorable response or ability for a trait

## — GENERAL GUIDELINES —

Genetic risk or predisposition given in the report is based on statistically relevant genomics research studies, which should not be taken as a diagnosis of any health condition or overall wellness.

Traits in the report are not genetically interlinked; their genetic associations are independent of each other. Therefore, every trait score and interpretation are independent of each other.



# EXPLORE MORE GENE TESTS

1. ALLERGY GENE REPORT WOMEN/MEN
2. BONE HEALTH GENE REPORT WOMEN/MEN
3. CARDIOVASCULAR GENE REPORT WOMEN/MEN
4. CIRCADIAN GENE REPORT WOMEN/MEN
5. DENTAL GENE REPORT MEN
6. FITNESS GENE REPORT
7. GASTRO GENE REPORT WOMEN/MEN
8. HEMATOLOGY GENE REPORT WOMEN/MEN
9. HORMONAL GENE REPORT WOMEN/MEN
10. IMMUNOLOGY GENE REPORT WOMEN/MEN
11. INFECTIOUS GENE REPORT WOMEN/MEN
12. LIFESTYLE GENE REPORT WOMEN/MEN
13. NEUROLOGY GENE REPORT WOMEN/MEN
14. NUTRITION GENE REPORT
15. OPHTHAL GENE REPORT WOMEN/MEN
16. PERSONALITY GENE REPORT
17. PULMONARY GENE REPORT WOMEN/MEN
18. RENAL GENE REPORT WOMEN/MEN
19. SKIN GENE REPORT

THE MOST  
EXPENSIVE  
REAL ESTATE IS  
**YOU**

Whatsapp Us



Call Us



+91-9743430000

[devika@quanutrition.com](mailto:devika@quanutrition.com)

[www.quanutrition.com](http://www.quanutrition.com)

**QUA**<sup>®</sup>  
**NUTRITION**  
SIGNATURE NUTRITION CLINICS