


Hormonal Gene Test Men

**SAMPLE
SUMMARY REPORT**





Hormonal Disorders

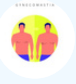




Osteoporosis and Bone Health

Traits	Risk	Rating	Description
 Primary Hyperparathyroidism	Slightly Elevated	8.0	As per your genotype, you have a slightly elevated risk of developing Primary Hyperparathyroidism.
 Osteoporosis	Typical	6.0	As per your genotype, you have a typical risk of developing Osteoporosis.


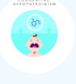
Adrenal Disorders

Traits	Risk	Rating	Description
 Addison's Disease	Typical	5.9	As per your genotype, you have a typical risk of developing Addison's Disease.
 Primary Aldosteronism (Hyperaldosteronism)	Typical	5.0	As per your genotype, you have a typical risk of developing Primary Aldosteronism.


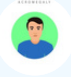
Men's Health

Traits	Risk	Rating	Description
 Gynecomastia	Slightly Elevated	7.6	As per your genotype, you have a slightly elevated risk of developing Gynecomastia.
 Male Infertility	Typical	5.9	As per your genotype, you have a typical risk of developing Male Infertility.
 Low Testosterone	Slightly Elevated	6.4	As per your genotype, you have a slightly elevated risk of developing Low Testosterone.
 Erectile Dysfunction	Slightly Elevated	6.6	As per your genotype, you have a slightly elevated risk of developing Erectile Dysfunction.
 Prostate Enlargement	Slightly Elevated	6.3	As per your genotype, you have a slightly elevated risk of developing Prostate Enlargement.





Pediatric Disorders

Traits	Risk	Rating	Description
 Pediatric Obesity	Typical	5.1	As per your genotype, you have a typical risk of developing Pediatric Obesity.
 Congenital Hypothyroidism	Typical	5.0	As per your genotype, you have a typical risk of developing Congenital Hypothyroidism.


Pituitary Disorders

Traits	Risk	Rating	Description
 Growth Hormone Deficiency	Typical	5.4	As per your genotype, you have a typical risk of developing Growth Hormone Deficiency (GHD).
 Acromegaly	Typical	4.4	As per your genotype, you have a typical risk of developing Acromegaly.

Thyroid Disorders

Traits	Risk	Rating	Description
 Hypothyroidism	Typical	5.9	As per your genotype, you have a typical risk of developing Hypothyroidism.
 Goiter	Slightly Elevated	6.8	As per your genotype, you have a slightly elevated risk of developing Goiter.
 Graves' Disease	Typical	5.7	As per your genotype, you have a typical risk of developing Graves' Disease.
 Hashimoto's Thyroiditis	Typical	5.7	As per your genotype, you have a typical risk of developing Hashimoto's Thyroiditis.

Diabetes Related

Traits	Risk	Rating	Description
 Type 1 Diabetes	Slightly Elevated	6.1	As per your genotype, you have a slightly elevated risk of developing Type 1 Diabetes Mellitus.

How to Read Your Report

— WHAT IS GENETICS? —

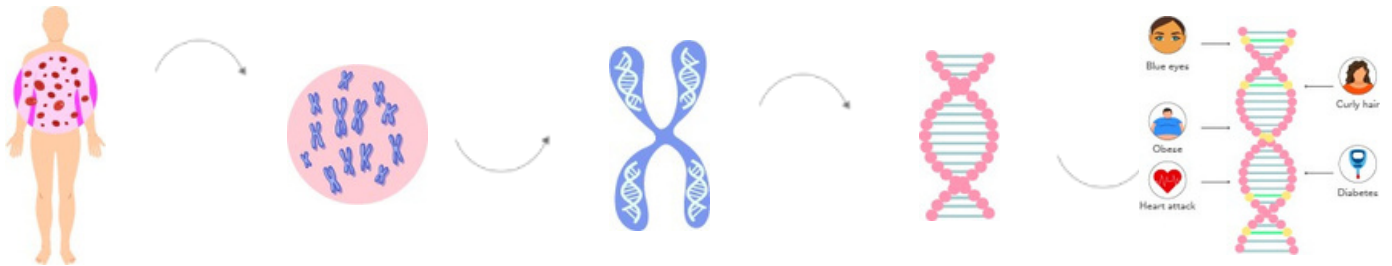
Human are made up of cells

Cells are made up of nucleus

Nucleus is made up of chromosomes

Chromosomes are made up of DNA

DNA is made up of genes



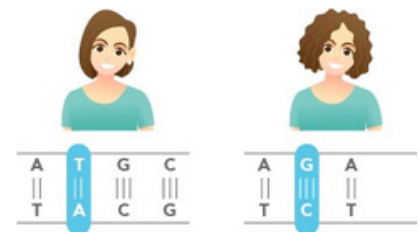
Changes in nucleotides lead to genetic variations

Genes are coded by nucleotides

A	T	G	C
T	A	C	G



~~Straight hair~~ Curly hair



WHAT IS PREDICTIVE GENETICS?



Population with predisposition to curly hair

Population with high risk of obesity



Genetic Variations Make Us All Unique



Population with predisposition to blue eyes

Population with high risk of heart attack



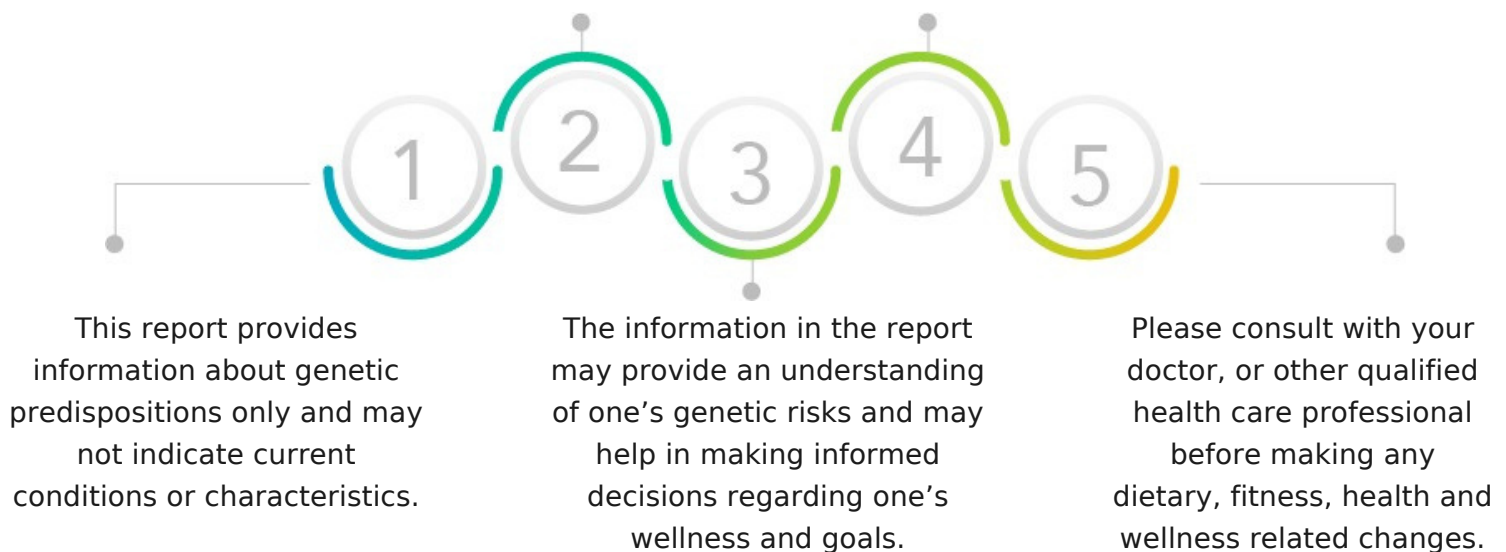
— SCORE INTERPRETATIONS —

SCORE	DEPICTION	INTERPRETATION
0-2	Excellent / Protective	An 'excellent / protective' score indicates a very favorable response or ability for a trait
2.1-4	Good / Lower Risk	A 'good / lower risk' score indicates a favorable response or ability for a trait
4.1-6	Typical	A 'typical' score indicates a typical response or ability for a trait
6.1-8	Poor / Slightly Elevated	A 'poor / slightly elevated' score indicates an unfavorable response or ability for a trait
8.1-10	Very Poor/ Highly Elevated	A 'very poor / highly elevated' score indicates a very unfavorable response or ability for a trait

— GENERAL GUIDELINES —

Genetic risk or predisposition given in the report is based on statistically relevant genomics research studies, which should not be taken as a diagnosis of any health condition or overall wellness.

Traits in the report are not genetically interlinked; their genetic associations are independent of each other. Therefore, every trait score and interpretation are independent of each other.



EXPLORE MORE GENE TESTS

1. ALLERGY GENE REPORT WOMEN/MEN
2. BONE HEALTH GENE REPORT WOMEN/MEN
3. CARDIOVASCULAR GENE REPORT WOMEN/MEN
4. CIRCADIAN GENE REPORT WOMEN/MEN
5. DENTAL GENE REPORT WOMEN/MEN
6. FITNESS GENE REPORT
7. GASTRO GENE REPORT WOMEN/MEN
8. HEMATOLOGY GENE REPORT WOMEN/MEN
9. HORMONAL GENE REPORT WOMEN
10. IMMUNOLOGY GENE REPORT WOMEN/MEN
11. INFECTIOUS GENE REPORT WOMEN/MEN
12. LIFESTYLE GENE REPORT WOMEN/MEN
13. NEUROLOGY GENE REPORT WOMEN/MEN
14. NUTRITION GENE REPORT
15. OPHTHAL GENE REPORT WOMEN/MEN
16. PERSONALITY GENE REPORT
17. PULMONARY GENE REPORT WOMEN/MEN
18. RENAL GENE REPORT WOMEN/MEN
19. SKIN GENE REPORT

THE MOST
EXPENSIVE
REAL ESTATE IS
YOU

Whatsapp Us



Call Us



+91-9743430000

devika@quanutrition.com

www.quanutrition.com

QUA[®]
NUTRITION
SIGNATURE NUTRITION CLINICS