

Hormonal Gene Test Women

**SAMPLE
SUMMARY REPORT**



Hormonal Disorders



Osteoporosis and Bone Health

Traits	Risk	Rating	Description
 Primary Hyperparathyroidism	Slightly Elevated	7.0	As per your genotype, you have a slightly elevated risk of developing Primary Hyperparathyroidism.
 Osteoporosis in Postmenopausal women	Slightly Elevated	7.0	As per your genotype, you have a slightly elevated risk of developing Postmenopausal Osteoporosis.
 Osteoporosis	Typical	5.7	As per your genotype, you have a typical risk of developing Osteoporosis.

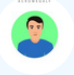

Adrenal Disorders

Traits	Risk	Rating	Description
 Addison's Disease	Slightly Elevated	6.9	As per your genotype, you have a slightly elevated risk of developing Addison's Disease.
 Primary Aldosteronism (Hyperaldosteronism)	Slightly Elevated	6.2	As per your genotype, you have a slightly elevated risk of developing Primary Aldosteronism.

Pediatric Disorders

Traits	Risk	Rating	Description
 Pediatric Obesity	Typical	5.4	As per your genotype, you have a typical risk of developing Pediatric Obesity.
 Congenital Hypothyroidism	Protective	2.0	As per your genotype, you are protected from the risk of developing Congenital Hypothyroidism.


Pituitary Disorders

Traits	Risk	Rating	Description
	Typical	5.0	As per your genotype, you have a typical risk of developing Acromegaly.
	Typical	4.8	As per your genotype, you have a typical risk of developing Growth Hormone Deficiency (GHD).

Thyroid Disorders

Traits	Risk	Rating	Description
	Typical	5.9	As per your genotype, you have a typical risk of developing Hypothyroidism.
	Slightly Elevated	6.4	As per your genotype, you have a slightly elevated risk of developing Goiter.
	Slightly Elevated	6.4	As per your genotype, you have a slightly elevated risk of developing Graves' Disease.
	Typical	6.0	As per your genotype, you have a typical risk of developing Hashimoto's Thyroiditis.

Women's Health

Traits	Risk	Rating	Description
 Premature Ovarian Failure	Highly Elevated	8.6	As per your genotype, you have a highly elevated risk of developing Premature Ovarian Failure (POF).
 Leiomyoma	Slightly Elevated	6.2	As per your genotype, have a slightly elevated risk of developing Leiomyoma.
 Endometriosis	Slightly Elevated	6.6	As per your genotype, you have a slightly elevated risk of developing Endometriosis.
 PCOS	Slightly Elevated	6.7	As per your genotype, you have a slightly elevated risk of developing Polycystic Ovary Syndrome (PCOS).

Diabetes Related

Traits	Risk	Rating	Description
 Type 1 Diabetes	Slightly Elevated	6.5	As per your genotype, you have a slightly elevated risk of developing Type 1 Diabetes Mellitus.
 Gestational Diabetes	Slightly Elevated	6.3	As per your genotype, you have a slightly elevated risk of developing Gestational Diabetes Mellitus (GDM).

How to Read Your Report

— WHAT IS GENETICS? —

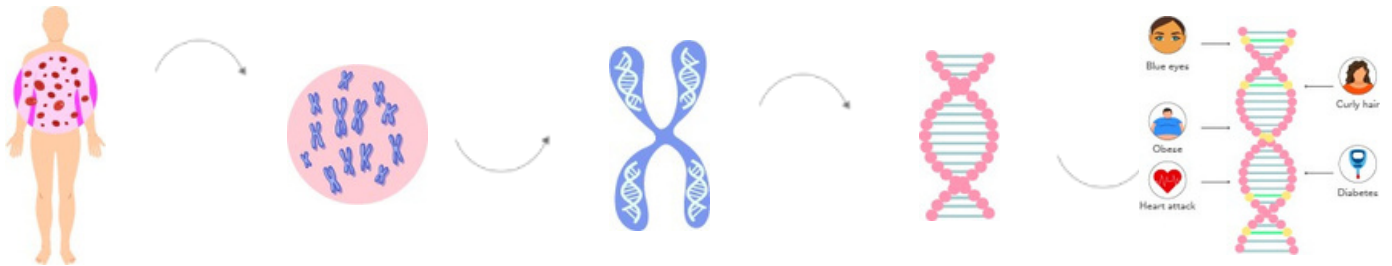
Human are made up of cells

Cells are made up of nucleus

Nucleus is made up of chromosomes

Chromosomes are made up of DNA

DNA is made up of genes

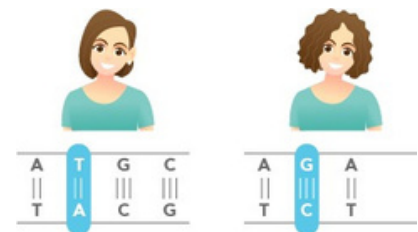


Genes are coded by nucleotides

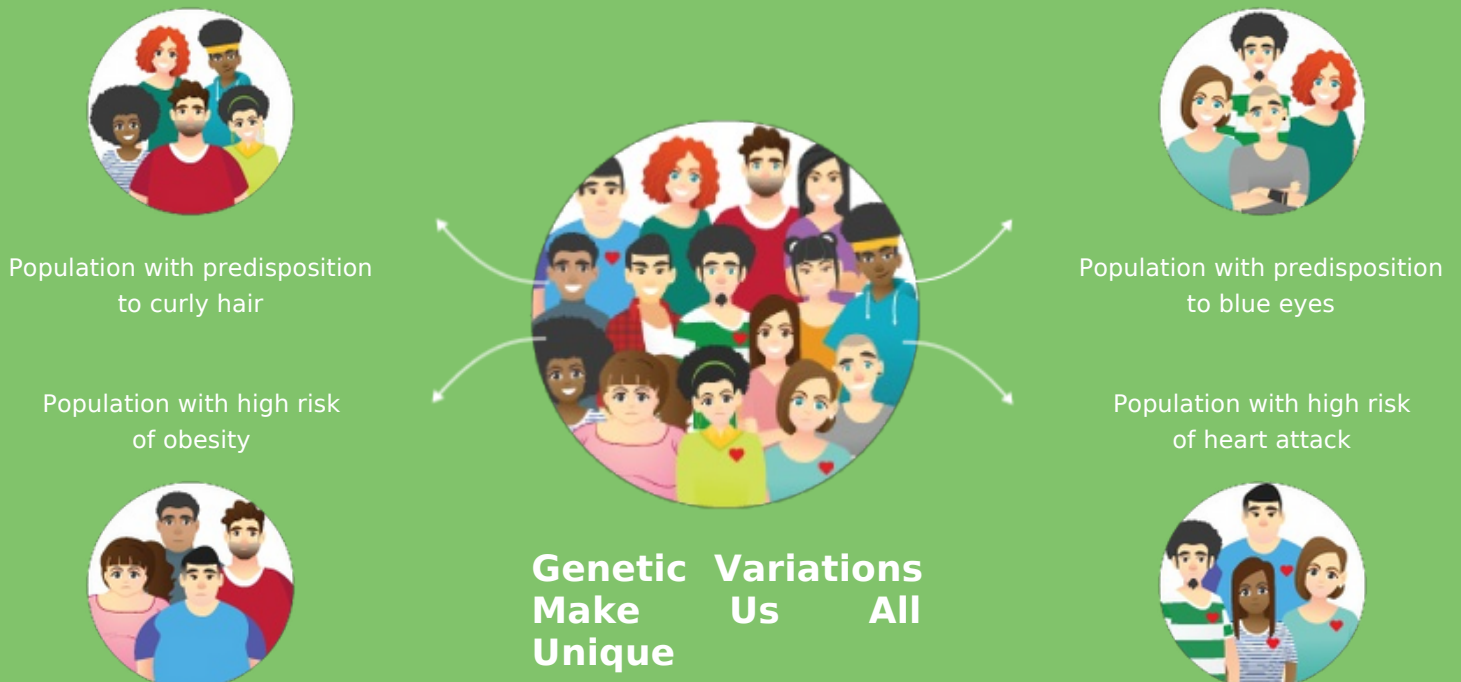
A	T	G	C
T	A	C	G



Changes in nucleotides lead to genetic variations
Straight hair Curly hair



WHAT IS PREDICTIVE GENETICS?



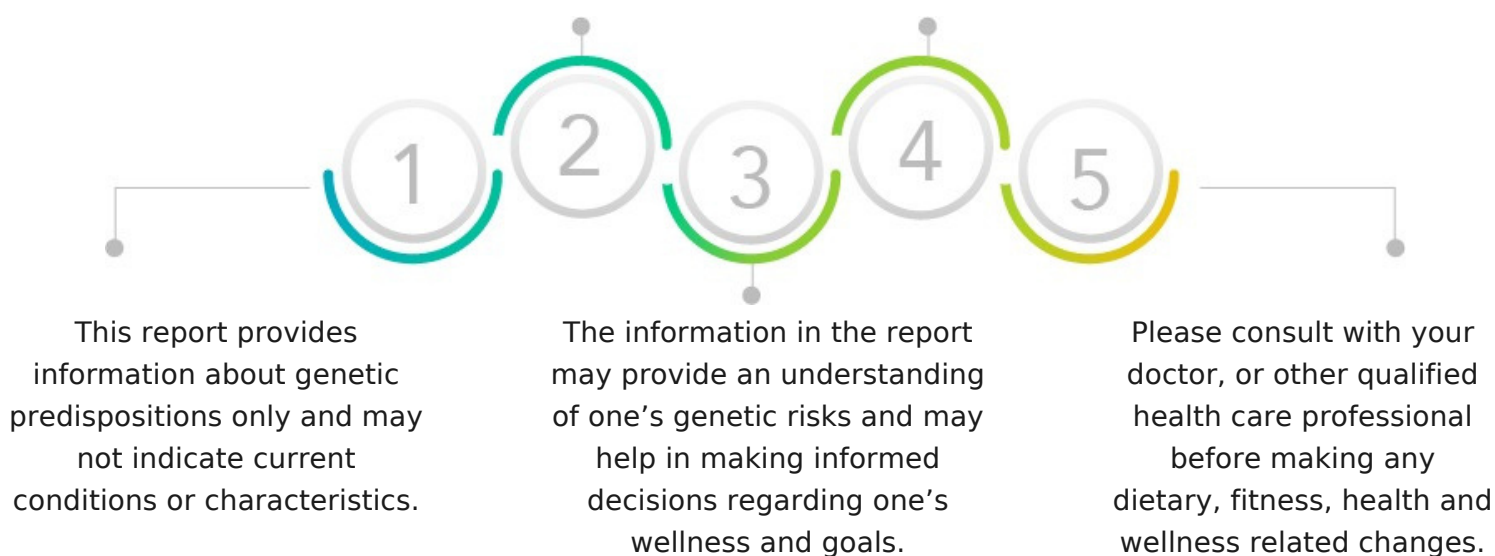
— SCORE INTERPRETATIONS —

SCORE	DEPICTION	INTERPRETATION
0-2	Excellent / Protective	An 'excellent / protective' score indicates a very favorable response or ability for a trait
2.1-4	Good / Lower Risk	A 'good / lower risk' score indicates a favorable response or ability for a trait
4.1-6	Typical	A 'typical' score indicates a typical response or ability for a trait
6.1-8	Poor / Slightly Elevated	A 'poor / slightly elevated' score indicates an unfavorable response or ability for a trait
8.1-10	Very Poor/ Highly Elevated	A 'very poor / highly elevated' score indicates a very unfavorable response or ability for a trait

— GENERAL GUIDELINES —

Genetic risk or predisposition given in the report is based on statistically relevant genomics research studies, which should not be taken as a diagnosis of any health condition or overall wellness.

Traits in the report are not genetically interlinked; their genetic associations are independent of each other. Therefore, every trait score and interpretation are independent of each other.



EXPLORE MORE GENE TESTS

1. ALLERGY GENE REPORT WOMEN/MEN
2. BONE HEALTH GENE REPORT WOMEN/MEN
3. CARDIOVASCULAR GENE REPORT WOMEN/MEN
4. CIRCADIAN GENE REPORT WOMEN/MEN
5. DENTAL GENE REPORT WOMEN/MEN
6. FITNESS GENE REPORT
7. GASTRO GENE REPORT WOMEN/MEN
8. HEMATOLOGY GENE REPORT WOMEN/MEN
9. HORMONAL GENE REPORT MEN
10. IMMUNOLOGY GENE REPORT WOMEN/MEN
11. INFECTIOUS GENE REPORT WOMEN/MEN
12. LIFESTYLE GENE REPORT WOMEN/MEN
13. NEUROLOGY GENE REPORT WOMEN/MEN
14. NUTRITION GENE REPORT
15. OPHTHAL GENE REPORT WOMEN/MEN
16. PERSONALITY GENE REPORT
17. PULMONARY GENE REPORT WOMEN/MEN
18. RENAL GENE REPORT WOMEN/MEN
19. SKIN GENE REPORT

THE MOST
EXPENSIVE
REAL ESTATE IS
YOU

Whatsapp Us



Call Us



+91-9743430000

devika@quanutrition.com

www.quanutrition.com

QUA[®]
NUTRITION
SIGNATURE NUTRITION CLINICS