



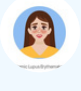



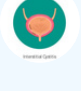


Immunology Gene Test Men

**SAMPLE
SUMMARY REPORT**




Immunology

Autoimmune

Traits	Risk	Rating	Description
 Autoimmune Pancreatitis	Highly Elevated Risk	9.0	As per your genotype, you have a highly elevated risk of developing autoimmune pancreatitis.
 Discoid Lupus	Slightly Elevated Risk	7.0	As per your genotype, you have a slightly elevated risk of developing discoid lupus.
 Systemic Lupus Erythematosus	Typical Risk	5.5	As per your genotype, you have a typical risk of developing systemic lupus erythematosus.
 Giant Cell Arteritis	Typical Risk	5.9	As per your genotype, you have a typical risk of developing giant cell arteritis.
 Mixed Connective Tissue Disease	Typical Risk	5.9	As per your genotype, you have a typical risk of developing mixed connective tissue disease.
 Microscopic Polyangiitis	Typical Risk	6.0	As per your genotype, you have a typical risk of developing microscopic polyangiitis.
 Interstitial Cystitis	Slightly Elevated Risk	6.9	As per your genotype, you have a slightly elevated risk of developing interstitial cystitis.
 Autoimmune Hemolytic Anemia	Slightly Elevated Risk	6.3	As per your genotype, you have a slightly elevated risk of developing autoimmune hemolytic anemia.
 Lichen Planus	Slightly Elevated Risk	6.7	As per your genotype, you have a slightly elevated risk of developing lichen planus.

Traits	Risk	Rating	Description
 Systemic Sclerosis	Slightly Elevated Risk	6.7	As per your genotype, you have a slightly elevated risk of developing systemic sclerosis.
 Uveitis	Typical Risk	5.5	As per your genotype, you have a typical risk of developing uveitis.
 Dermatomyositis	Typical Risk	5.9	As per your genotype, you have a typical risk of developing dermatomyositis.
 Pemphigoid	Typical Risk	5.0	As per your genotype, you have a typical risk of developing pemphigoid.
 Inflammatory Myopathy	Typical Risk	5.8	As per your genotype, you have a typical risk of developing inflammatory myopathy.
 Autoimmune Hepatitis	Typical Risk	5.8	As per your genotype, you have a typical risk of developing autoimmune hepatitis.
 Antiphospholipid Syndrome	Typical Risk	6.0	As per your genotype, you have a typical risk of developing antiphospholipid syndrome.
 Sjogren's Syndrome	Typical	6.0	As per your genotype, you have a typical risk of developing Sjogren's syndrome.
 Asthma	Slightly Elevated Risk	6.4	As per your genetics, you have a high likelihood of developing asthma.

Inflammation

Traits	Risk	Rating	Description
 <p>Behcet's Disease</p>	<p>Slightly Elevated Risk</p>	<p>6.2</p>	<p>As per your genotype, you have a slightly elevated risk of developing Behcet's disease.</p>

How to Read Your Report

— WHAT IS GENETICS? —

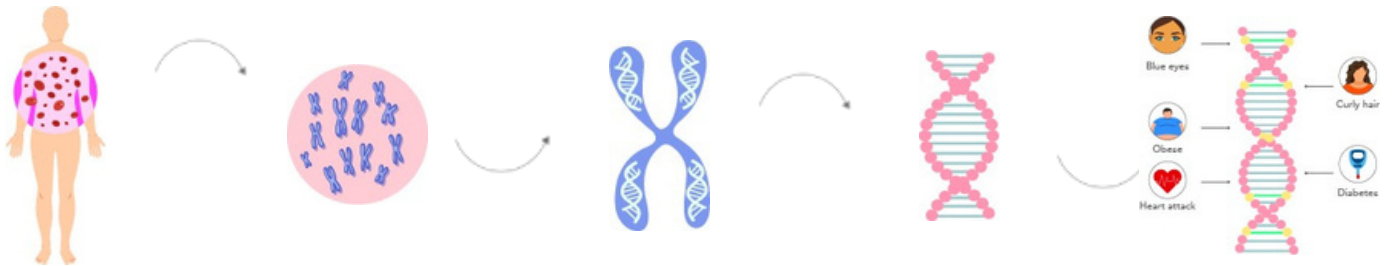
Human are made up of cells

Cells are made up of nucleus

Nucleus is made up of chromosomes

Chromosomes are made up of DNA

DNA is made up of genes

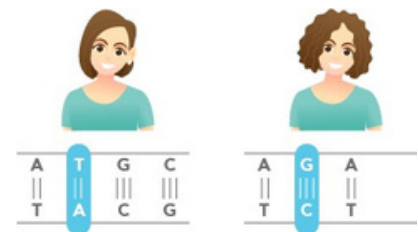


Genes are coded by nucleotides

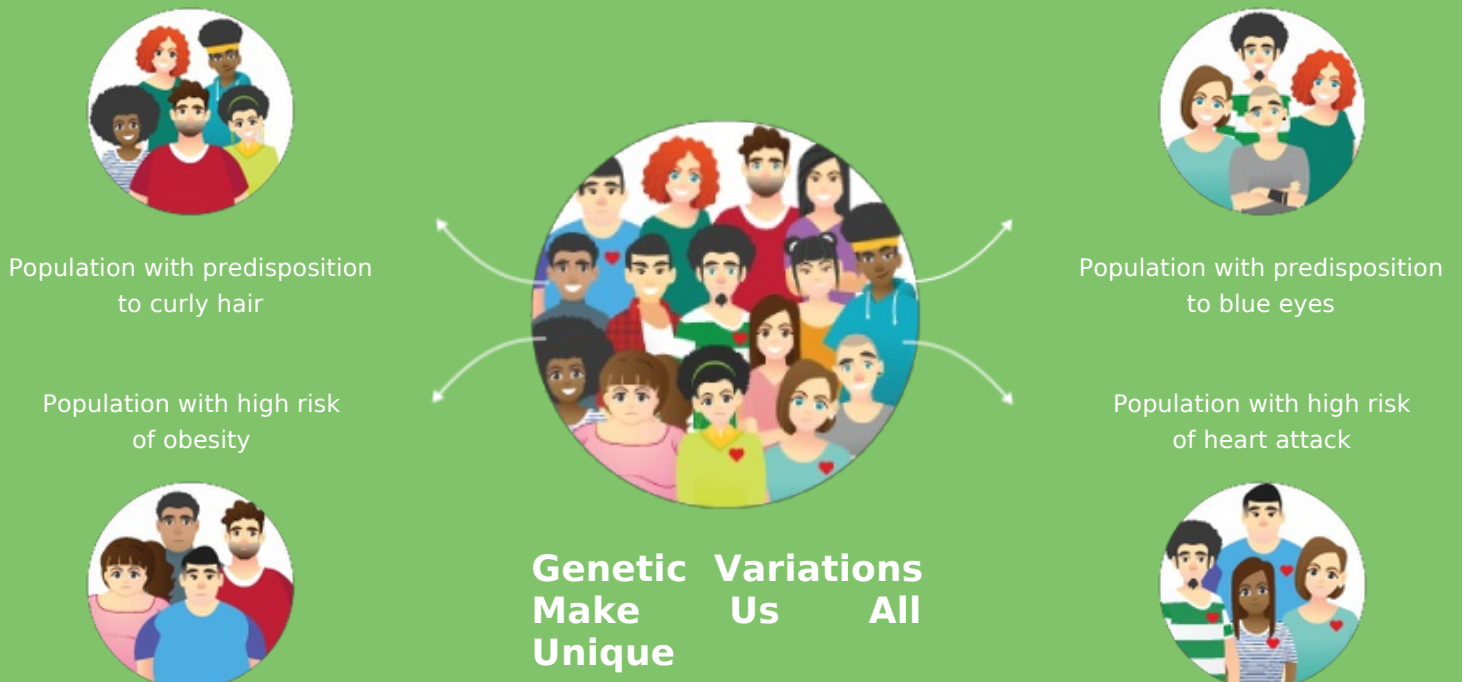
A	T	G	C
T	A	C	G



Changes in nucleotides lead to genetic variations
Straight hair Curly hair



WHAT IS PREDICTIVE GENETICS?



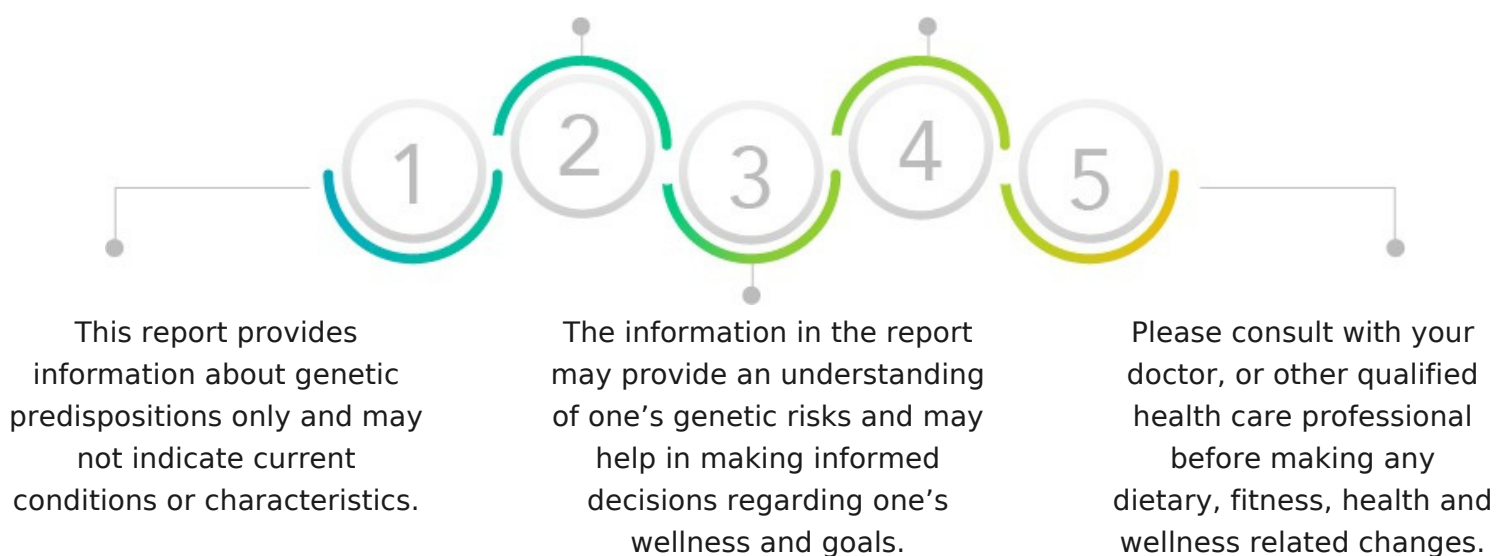
— SCORE INTERPRETATIONS —

SCORE	DEPICTION	INTERPRETATION
0-2	Excellent / Protective	An 'excellent / protective' score indicates a very favorable response or ability for a trait
2.1-4	Good / Lower Risk	A 'good / lower risk' score indicates a favorable response or ability for a trait
4.1-6	Typical	A 'typical' score indicates a typical response or ability for a trait
6.1-8	Poor / Slightly Elevated	A 'poor / slightly elevated' score indicates an unfavorable response or ability for a trait
8.1-10	Very Poor/ Highly Elevated	A 'very poor / highly elevated' score indicates a very unfavorable response or ability for a trait

— GENERAL GUIDELINES —

Genetic risk or predisposition given in the report is based on statistically relevant genomics research studies, which should not be taken as a diagnosis of any health condition or overall wellness.

Traits in the report are not genetically interlinked; their genetic associations are independent of each other. Therefore, every trait score and interpretation are independent of each other.



EXPLORE MORE GENE TESTS

1. ALLERGY GENE REPORT WOMEN/MEN
2. BONE HEALTH GENE REPORT WOMEN/MEN
3. CARDIOVASCULAR GENE REPORT WOMEN/MEN
4. CIRCADIAN GENE REPORT WOMEN/MEN
5. DENTAL GENE REPORT WOMEN/MEN
6. FITNESS GENE REPORT
7. GASTRO GENE REPORT WOMEN/MEN
8. HEMATOLOGY GENE REPORT WOMEN/MEN
9. HORMONAL GENE REPORT WOMEN/MEN
10. IMMUNOLOGY GENE REPORT WOMEN
11. INFECTIOUS GENE REPORT WOMEN/MEN
12. LIFESTYLE GENE REPORT WOMEN/MEN
13. NEUROLOGY GENE REPORT WOMEN/MEN
14. NUTRITION GENE REPORT
15. OPHTHAL GENE REPORT WOMEN/MEN
16. PERSONALITY GENE REPORT
17. PULMONARY GENE REPORT WOMEN/MEN
18. RENAL GENE REPORT WOMEN/MEN
19. SKIN GENE REPORT

THE MOST
EXPENSIVE
REAL ESTATE IS
YOU

Whatsapp Us



Call Us



+91-9743430000

devika@quanutrition.com

www.quanutrition.com