

# Infectious Gene Test Women

**SAMPLE  
SUMMARY REPORT**



# Infectious Diseases


## Bacterial Infections

Traits		Risk	Rating	Description
	Tuberculosis	Slightly Elevated Risk	6.9	As per your genotype, you have a slightly elevated risk of developing Tuberculosis.
	Brucellosis	Typical Risk	5.3	As per your genotype, you have a typical risk of developing brucellosis.
	Chronic Q Fever	Typical Risk	5.3	As per your genotype, you have a typical risk of developing Chronic Q fever.
	Helicobacter Pylori Infection	Typical Risk	5.0	As per your genotype, you have a typical risk of developing Helicobacter Pylori Infection
	Syphilis	Typical Risk	5.0	As per your genotype, you have a typical risk of developing Syphilis.




## Parasitic Infections

Traits		Risk	Rating	Description
	Leishmaniasis	Slightly Elevated Risk	7.2	As per your genotype, you have a slightly elevated risk of developing Leishmaniasis.
	Toxoplasmosis	Slightly Elevated Risk	7.0	As per your genotype, you have a slightly elevated risk of developing toxoplasmosis.
	Chagas Disease	Typical Risk	5.5	As per your genotype, you have a typical risk of developing Chagas disease.
	Malaria	Typical Risk	5.7	As per your genotype, you have a typical risk of developing Malaria.
	Human African Trypanosomiasis (Sleeping Sickness)	Typical Risk	4.5	As per your genotype, you have a typical risk of developing sleeping sickness.

## Viral Infections

Traits		Risk	Rating	Description
	Dengue	Typical Risk	5.9	As per your genotype, you have a typical risk of developing Dengue.
	Encephalitis	Slightly Elevated Risk	6.5	As per your genotype, you have a slightly elevated risk of developing Encephalitis.
	Hand, Foot and Mouth Disease	Slightly Elevated Risk	7.3	As per your genotype, you have a slightly elevated risk of developing Hand, foot and mouth disease (HFMD).
	Hepatitis	Typical Risk	5.6	As per your genotype, you have a protective genotype against developing Hepatitis.
	HIV Infection	Typical Risk	5.8	As per your genotype, you have a typical risk of developing HIV infection.
	Influenza	Slightly Elevated Risk	6.5	As per your genotype, you have a slightly elevated risk of developing Influenza.

## Microbial Infections

Traits		Risk	Rating	Description
	Keratitis	Slightly Elevated Risk	7.6	As per your genotype, you have a slightly elevated risk of developing keratitis.
	Pneumonia	Slightly Elevated Risk	6.2	As per your genotype, you have a slightly elevated risk of developing pneumonia.
	Sepsis	Slightly Elevated Risk	6.1	As per your genotype, you have a slightly elevated risk of developing sepsis.
	Recurrent Vulvovaginal Infection	Slightly Elevated Risk	7.0	As per your genotype, you have a slightly elevated risk of developing Recurrent VulvoVaginal Infection.

# How to Read Your Report

## — WHAT IS GENETICS? —

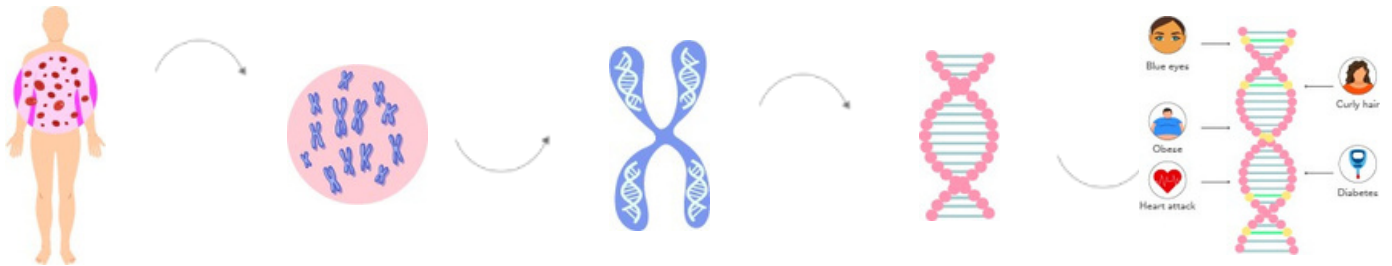
Human are made up of cells

Cells are made up of nucleus

Nucleus is made up of chromosomes

Chromosomes are made up of DNA

DNA is made up of genes

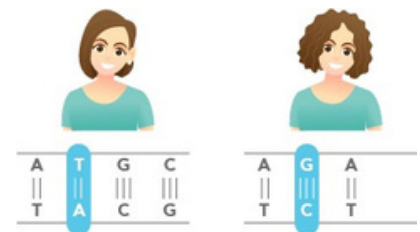


Genes are coded by nucleotides

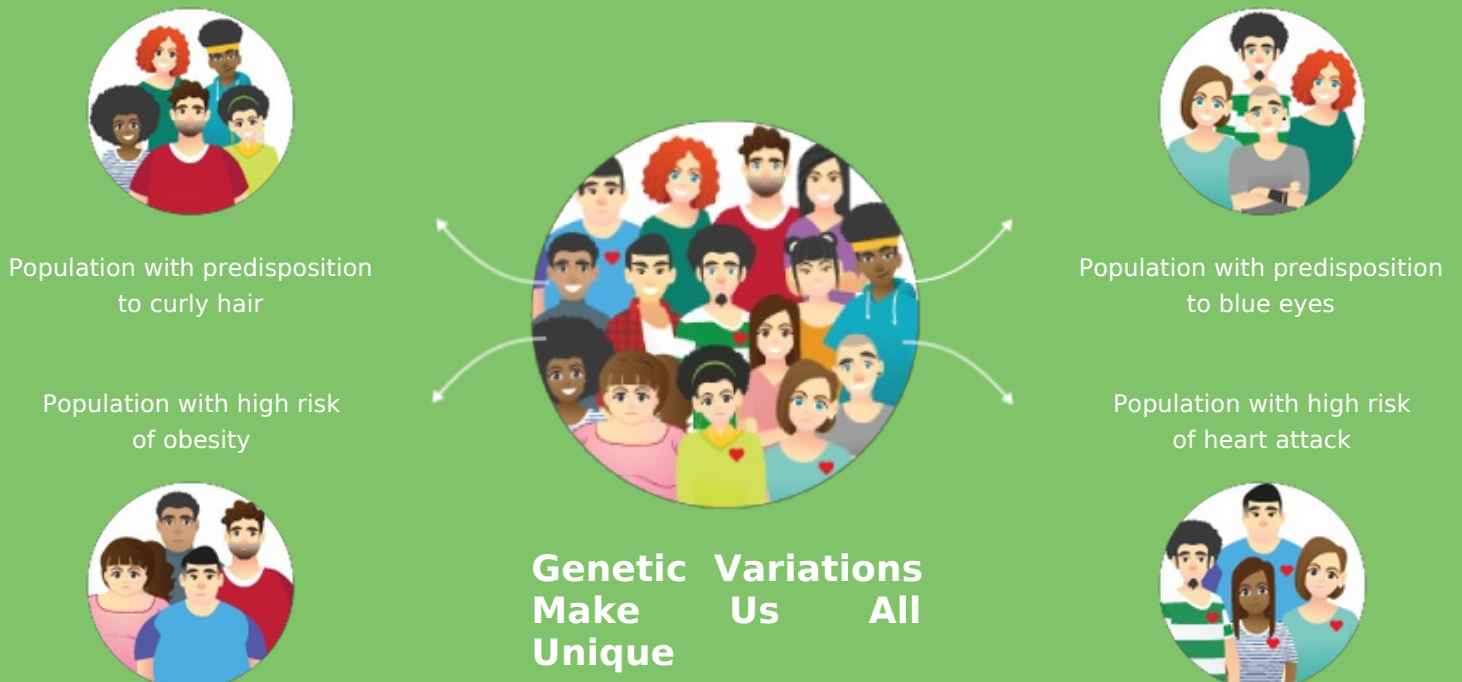
A	T	G	C
T	A	C	G



Changes in nucleotides lead to genetic variations  
Straight hair Curly hair



## WHAT IS PREDICTIVE GENETICS?



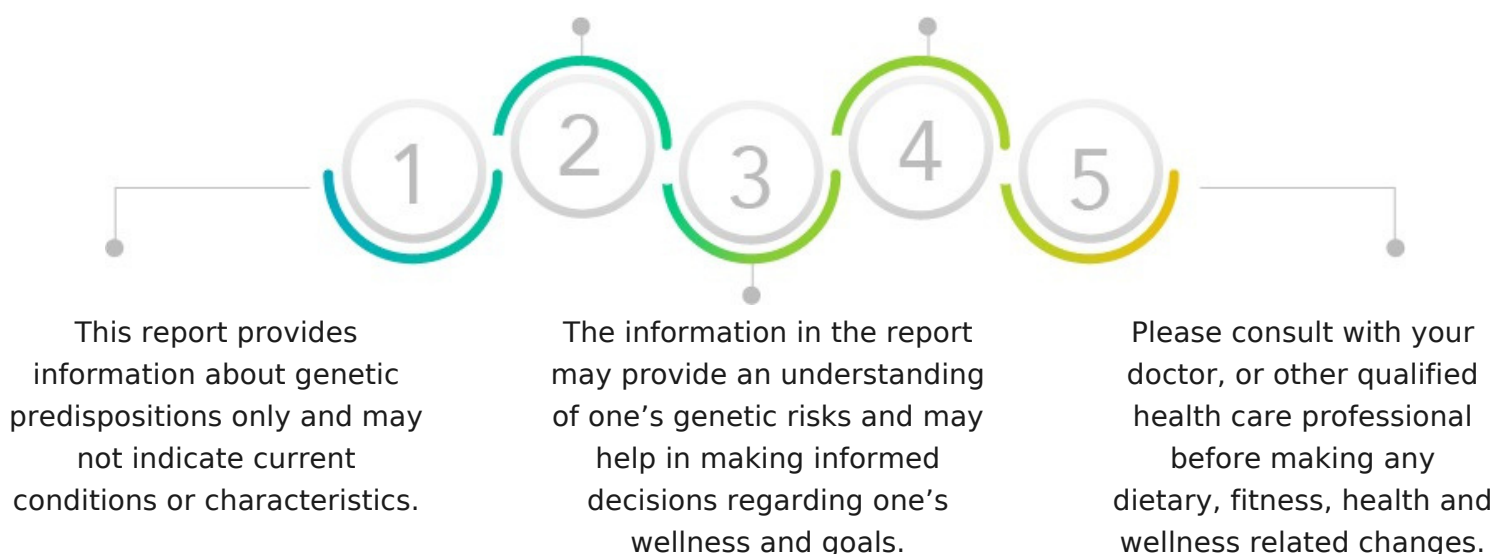
## — SCORE INTERPRETATIONS —

SCORE	DEPICTION	INTERPRETATION
0-2	Excellent / Protective	An 'excellent / protective' score indicates a very favorable response or ability for a trait
2.1-4	Good / Lower Risk	A 'good / lower risk' score indicates a favorable response or ability for a trait
4.1-6	Typical	A 'typical' score indicates a typical response or ability for a trait
6.1-8	Poor / Slightly Elevated	A 'poor / slightly elevated' score indicates an unfavorable response or ability for a trait
8.1-10	Very Poor/ Highly Elevated	A 'very poor / highly elevated' score indicates a very unfavorable response or ability for a trait

## — GENERAL GUIDELINES —

Genetic risk or predisposition given in the report is based on statistically relevant genomics research studies, which should not be taken as a diagnosis of any health condition or overall wellness.

Traits in the report are not genetically interlinked; their genetic associations are independent of each other. Therefore, every trait score and interpretation are independent of each other.



# EXPLORE MORE GENE TESTS

1. ALLERGY GENE REPORT WOMEN/MEN
2. BONE HEALTH GENE REPORT WOMEN/MEN
3. CARDIOVASCULAR GENE REPORT WOMEN/MEN
4. CIRCADIAN GENE REPORT WOMEN/MEN
5. DENTAL GENE REPORT WOMEN/MEN
6. FITNESS GENE REPORT
7. GASTRO GENE REPORT WOMEN/MEN
8. HEMATOLOGY GENE REPORT WOMEN/MEN
9. HORMONAL GENE REPORT WOMEN/MEN
10. IMMUNOLOGY GENE REPORT WOMEN/MEN
11. INFECTIOUS GENE REPORT MEN
12. LIFESTYLE GENE REPORT WOMEN/MEN
13. NEUROLOGY GENE REPORT WOMEN/MEN
14. NUTRITION GENE REPORT
15. OPHTHAL GENE REPORT WOMEN/MEN
16. PERSONALITY GENE REPORT
17. PULMONARY GENE REPORT WOMEN/MEN
18. RENAL GENE REPORT WOMEN/MEN
19. SKIN GENE REPORT

THE MOST  
EXPENSIVE  
REAL ESTATE IS  
**YOU**

Whatsapp Us



Call Us



+91-9743430000

[devika@quanutrition.com](mailto:devika@quanutrition.com)

[www.quanutrition.com](http://www.quanutrition.com)

**QUA**<sup>®</sup>  
**NUTRITION**  
SIGNATURE NUTRITION CLINICS